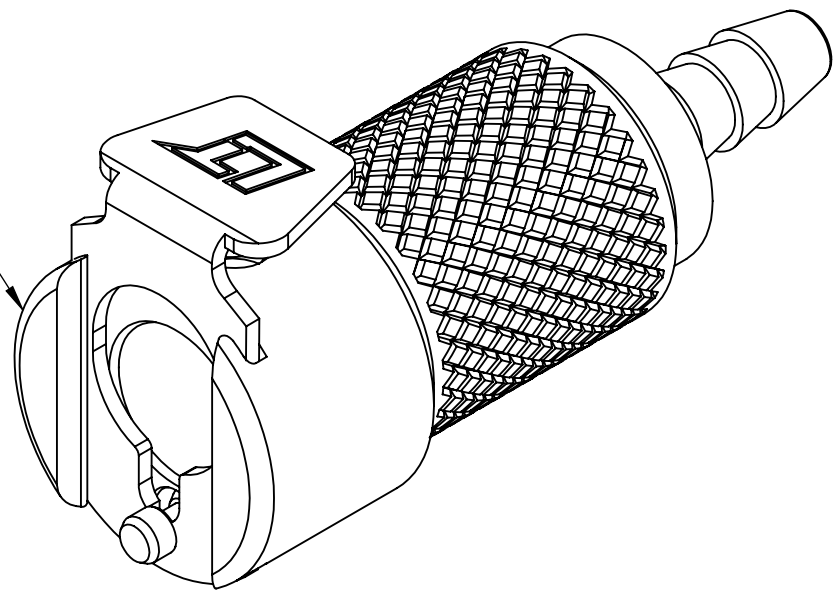
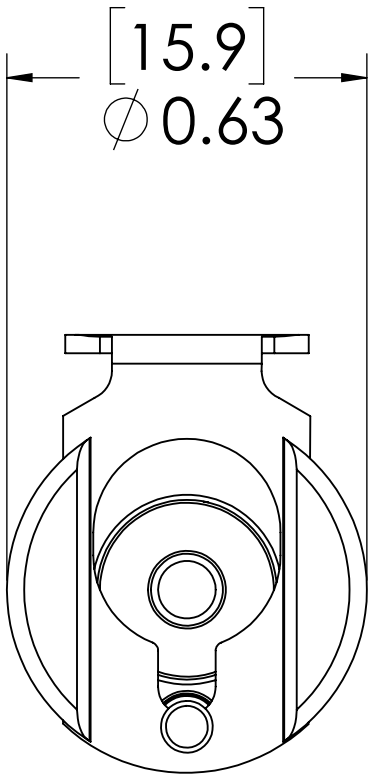
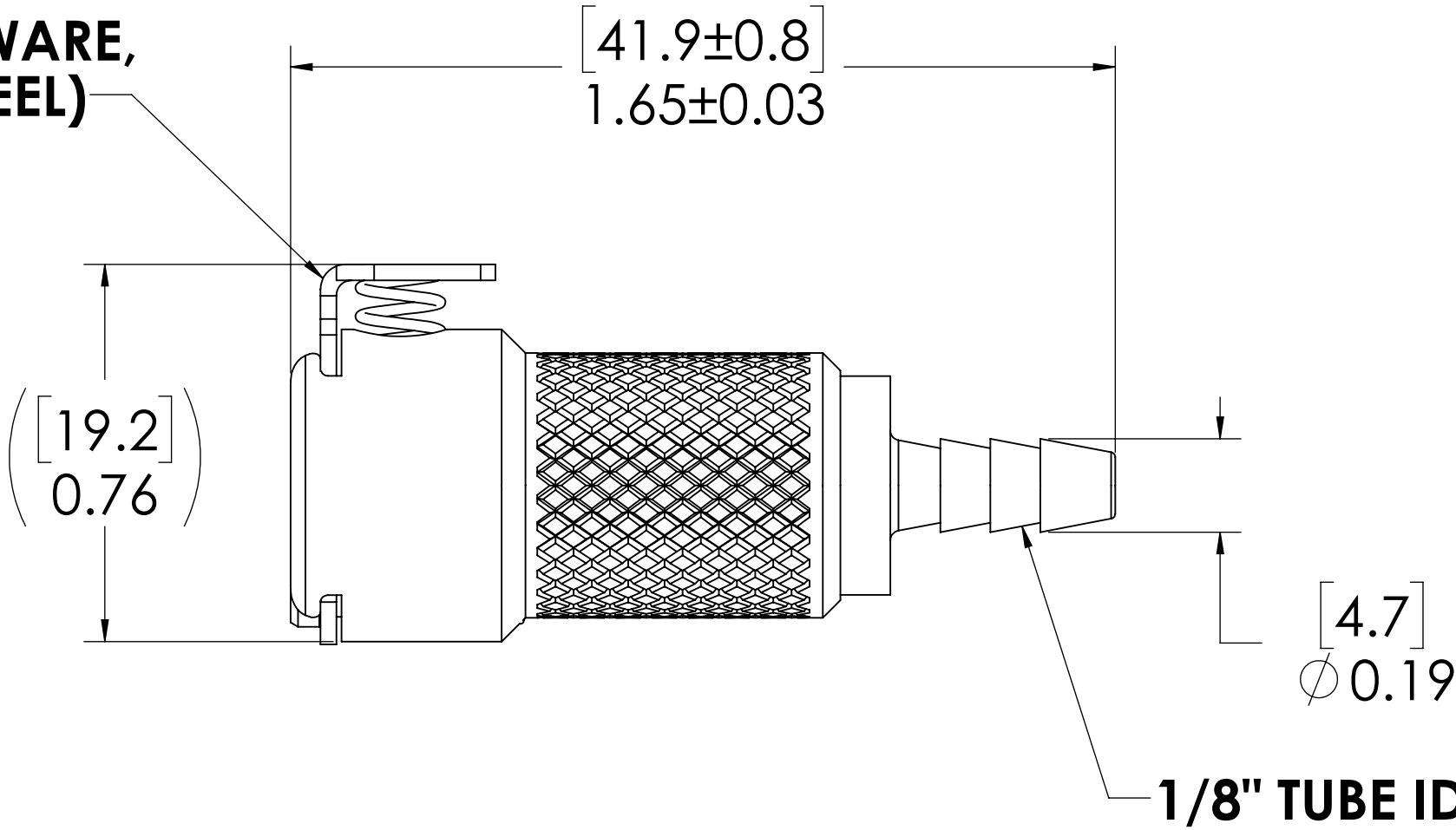


REVISIONS						
SHEET	ZONE	REV.	ECO	DESCRIPTION	DATE	APPROVED
ALL	ALL	A	50242	2PIN, PIN SPRING & 2017 FORMAT UPDATE	11/6/2018	HRC

SOCKET,
(BRASS, NICKEL
AND CHROME PLATED)




LATCH HARDWARE,
(STAINLESS STEEL)



FOR REFERENCE ONLY

- NOTES:**
- MATERIAL: BRASS
 - COLOR: CHROME

UNLESS OTHERWISE SPECIFIED:						
DIMENSIONS ARE IN INCHES TOLERANCES: FRACTIONAL ±1/32 ANGULAR, MACH ±0.5 ONE PLACE DECIMAL ±0.1 TWO PLACE DECIMAL ±0.01 THREE PLACE DECIMAL ±0.005 TWO PLACE DUAL (mm) [±0.12]	DRAWN	RDA	1/22/2018	PART NO: 20CB-S2-02		
	CHECKED	HRC	1/22/2018			
	ENG APPR.	HRC	11/6/18	DESCRIPTION: LinkTech 20CB Series Straight Female, Non-valved, 125 HB, Chrome Brass		
	MFG APPR.	BDB	11/6/18			
PROPRIETARY AND CONFIDENTIAL THE INFORMATION CONTAINED IN THIS DRAWING IS THE SOLE PROPERTY OF LINKTECH LLC. ANY REPRODUCTION OR DISCLOSURE IN PART OR AS A WHOLE WITHOUT THE WRITTEN PERMISSION OF LINKTECH LLC IS STRICTLY PROHIBITED.	PRODUCTION	LS	11/6/18	SIZE	DWG. NO.	REV
	COMMENTS:			C	20CB200184	A
				SCALE: NTS	WEIGHT:	SHEET 1 OF 1